

THE COMMUNITY WORKSHOP NO. 3

Meeting

8/17/2022

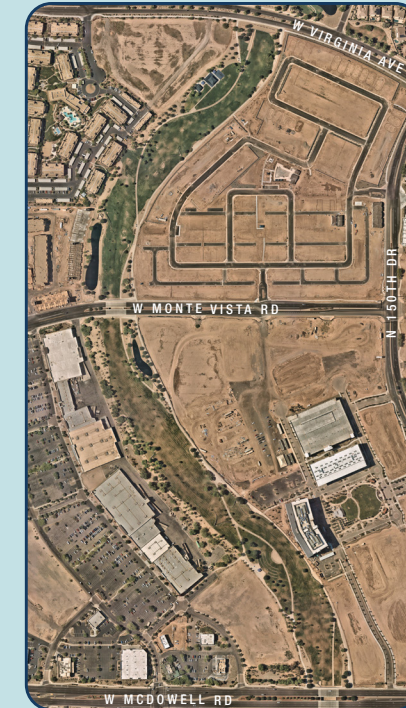


CITY OF
Goodyear

BULLARD WASH PARK II

- Access is limited. Add connection from adjacent apartments.
- Add chillers to all drinking fountains.
- Add more benches along walkways.

Amenity	Assessment
AMPHITHEATER	5
BENCH	4
DOG BAG STATION	5
IRRIGATION SYSTEM (AC)	3
LAKE / POND	4
LANDSCAPE AREA (AC)	2
LIGHTING (SITE, SPORTS, PED, ETC)	4
OPEN TURF AREA (AC)	3
PARKING LOT (SPACES)	4
PICNIC TABLE	3
PUBLIC ART	5
SIGNAGE (PARK ENTRY)	1
SIGNAGE (REGULATORY)	2
TRAIL - PAVED (MI)	4
TRASH RECEPTACLE	4



CITY OF
Goodyear

BULLARD WASH PARK I

- Access is limited, consider adding parking and trailhead amenities.
- Consider improved channelization of water. Turf is currently 6"-8" higher than concrete low-flow channel due to silt build-up.
- Replace exercise stations.
- Add more benches along walkways.
- Reconfigure pull-offs to accommodate maintenance trailers.

Amenity	Assessment
BASEBALL FIELD (NON-LIGHTED)	2
BASKETBALL COURT (LIGHTED)	4
BBQ PIT/ GRILL	4
BENCH	4
BIKE RACK/ LOOP	4
DRINKING FOUNTAIN	4
LANDSCAPE AREA (AC)	4
LIGHTING (SITE, SPORTS, PED, ETC)	4
OPEN TURF AREA (AC)	4
PARKING LOT (SPACES)	3
PICNIC TABLE	4
PLAYGROUND (NON-SHADED)	3
PLAYGROUND (SHADED)	4
RAMADA	4
RESTROOM BUILDING	4
SIGNAGE (REGULATORY)	3
TRAIL - PAVED (MI)	4
TRASH RECEPTACLE	4
VOLLEYBALL COURT (SAND)	4



THE COMMUNITY WORKSHOP NO. 3

Meeting

8/17/2022



CITY OF Goodyear



GOODYEAR COMMUNITY PARK

- Consider ground surface alternative to turf in areas around skate park, potentially artificial turf.
- Replace fencing and lighting around skate park.
- Improve restroom facilities.
- Replace site furnishings under ramadas with two picnic tables.
- Replace existing lighting with LED fixtures.
- Improve tennis signage and locations.
- Replace site furnishings, specifically benches and picnic tables.
- Add chiller to drinking fountains.
- Resolve erosion issues on turf slopes.
- Resolve drainage issues, evaluate drainage structures and their relationship to active turf areas.
- Reconfigure park elements to allow for more flat, usable turf area.
- Remove turf immediately adjacent to sport courts to eliminate overspray onto courts.
- Add foot wash station to sand volleyball courts.
- Push button lighting at volleyball courts should be relocated outside of sprinkler radius.
- Consider alternate ground surfacing adjacent to volleyball courts. Sand tends to spill onto adjacent concrete.
- Upsize BBQ grills in larger ramadas.
- Replace existing ramadas with ramadas of varying sizes to accommodate different user needs and capacities. Ramadas for larger groups are important.
- Put all lighting on an automated system to best organize timers.
- Look for drainage solution to eliminate splash pad overflow into ramada area.
- Increase size of fabric shade structures adjacent to the splash pad.
- Replace ball field backstops.
- Remove trees around stage area and replace with structural shade.
- Relocate dog park to be further from ball fields.
- Add mile markers to perimeter path.
- Add storage areas to restroom buildings.

Amenity	Assessment
AMPHITHEATER	3
BASEBALL FIELD (LIGHTED)	4
BASKETBALL COURT (LIGHTED)	3
BBQ PIT/ GRILL	2
BENCH	2
BIKE RACK/ LOOP	3
DRINKING FOUNTAIN	3
LANDSCAPE AREA (AC)	4
LIGHTING (SITE, SPORTS, PED, ETC)	3
MAINTENANCE YARD/ BUILDING	4
OPEN TURF AREA (AC)	2
PARKING LOT (SPACES)	3
PICKLEBALL COURT	4
PICNIC TABLE	2
PLAYGROUND (SHADED)	3
PUBLIC ART	4
RAMADA	3
RESTROOM BUILDING	2
SHADE STRUCTURE (STAND-ALONE)	2
SIGNAGE (PARK ENTRY)	4
SIGNAGE (REGULATORY)	3
SKATEBOARD PARK	4
SOFTBALL FIELD (LIGHTED)	4
SPRAY PAD	3
TENNIS COURT (LIGHTED)	3
TRAIL - PAVED (MI)	4
TRASH RECEPTACLE	2
VOLLEYBALL COURT (SAND)	3



CITY OF Goodyear



RIO PASEO PARK

- Add wayfinding signage and identification.

Amenity	Assessment
BENCH	3
DRINKING FOUNTAIN	3
LAKE / POND	4
LANDSCAPE AREA (AC)	4
LIGHTING (SITE, SPORTS, PED, ETC)	2
OPEN TURF AREA (AC)	3
PICNIC TABLE	2
PLAYGROUND (SHADED)	2
RAMADA	3
SHADE STRUCTURE (STAND-ALONE)	3
TRAIL - PAVED (MI)	4
TRASH RECEPTACLE	3



THE COMMUNITY WORKSHOP NO. 3

Meeting

8/17/2022



CITY OF Goodyear



FALCON PARK

- Provide an electrical connection to the ramada. Provide lighting and convenience receptacles.
- Replace basketball rims at basketball courts.
- Provide larger BBQ grills to serve ramada capacity.
- Construct maintenance facility to replace current temporary maintenance storage solution.
- Create a path between the volleyball and basketball courts.
- Relocate benches at volleyball courts away from sprinklers.
- Correct the drainage issue at the park near Bullard Wash.
- Reconfigure parking to provide an adequate turnaround for vehicles. Increase parking in general. Provide a connection to Bullard Wash trails.
- Consider adding wayfinding to connect park users with Falcon retention and Bullard Wash.
- Renovate basketball court to provide sport court surfacing.

Amenity	Assessment
BASEBALL FIELD (LIGHTED)	4
BASKETBALL COURT (LIGHTED)	4
BBQ PIT/ GRILL	3
BENCH	3
BIKE RACK/ LOOP	3
BLEACHERS	4
DOG BAG STATION	4
DRINKING FOUNTAIN	3
LANDSCAPE AREA (AC)	4
OPEN TURF AREA (AC)	3
PARKING LOT (SPACES)	4
PICNIC TABLE	2
PLAYGROUND (SHADED)	4
PUBLIC ART	3
RAMADA	3
RESTROOM BUILDING	3
SIGNAGE (PARK ENTRY)	1
SIGNAGE (REGULATORY)	4
TRAIL - PAVED (MI)	4
TRASH RECEPTACLE	3
VOLLEYBALL COURT (SAND)	4



CITY OF Goodyear



CANADA VILLAGE PARK

- Create looped multi-use pathway / sidewalk around entire park perimeter with consistent and park standard sidewalk width.
- Add pathway lighting per park standard.
- Add a tree along perimeter wall near the ramada / playground area.
- Add ADA ramp for playground access.
- Add drinking fountain for basketball court.

Amenity	Assessment
BASKETBALL COURT (LIGHTED)	4
BBQ PIT/ GRILL	4
DOG BAG STATION	4
IRRIGATION SYSTEM (AC)	3
LIGHTING (SITE, SPORTS, PED, ETC)	4
OPEN TURF AREA (AC)	3
PARKING LOT (SPACES)	4
PICNIC TABLE	4
PLAYGROUND (SHADED)	3
RAMADA	4
SIGNAGE (PARK ENTRY)	1
SIGNAGE (REGULATORY)	2
TRASH RECEPTACLE	3



THE COMMUNITY WORKSHOP NO. 3

Meeting

8/17/2022



CITY OF
Goodyear



PARQUE DE PAZ

- The community garden largely goes unused. Consider removing community garden and replacing with another amenity.
- Add a ramada to the park.
- Improve basketball court lighting.
- Renovate existing irrigation system to improve turf quality.

Amenity	Assessment
BENCH	2
BIKE RACK/ LOOP	3
DRINKING FOUNTAIN	3
LANDSCAPE AREA (AC)	3
LIGHTING (SITE, SPORTS, PED, ETC)	3
OPEN TURF AREA (AC)	2
PICNIC TABLE	2
PLAYGROUND (SHADED)	4
SIGNAGE (REGULATORY)	2
TRAIL - PAVED (MI)	4
TRASH RECEPTACLE	3



CITY OF
Goodyear



PALM VALLEY PARK

- Add lighting and convenience receptacles to existing ramadas.
- Remove backstop in turf area.
- Consider modifying small turf areas in order to resolve irrigation pressure issue.
- Add BBQ grills to ramada areas.

Amenity	Assessment
BASEBALL FIELD (NON-LIGHTED)	2
BASKETBALL COURT (LIGHTED)	4
BBQ PIT/ GRILL	4
BENCH	4
BIKE RACK/ LOOP	4
DRINKING FOUNTAIN	4
LANDSCAPE AREA (AC)	4
LIGHTING (SITE, SPORTS, PED, ETC)	4
OPEN TURF AREA (AC)	4
PARKING LOT (SPACES)	3
PICNIC TABLE	4
PLAYGROUND (NON-SHADED)	3
PLAYGROUND (SHADED)	4
RAMADA	4
RESTROOM BUILDING	4
SIGNAGE (REGULATORY)	3
TRAIL - PAVED (MI)	4
TRASH RECEPTACLE	4
VOLLEYBALL COURT (SAND)	4



THE COMMUNITY WORKSHOP NO. 3

Meeting

8/17/2022



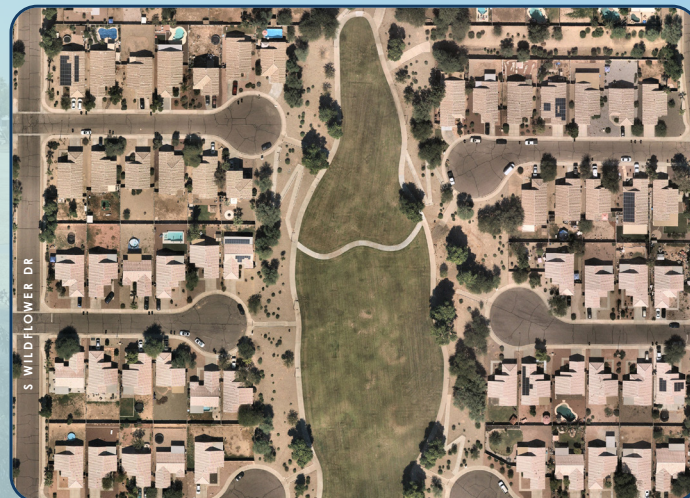
CITY OF Goodyear



WILDFLOWER PARK NORTH

- Replace play panels in playground.
- Add lighting to playground shade structure.
- Work with APS to replace and match light fixtures.
- Replace existing ramada and concrete pad.
- Reduce turf to alleviate irrigation pressure issues.
- Add walkway to adjacent streets for improved neighborhood connectivity.
- Add a drinking fountain to the park.
- Replace concrete header where needed as a result of adjacent tree roots.
- Add drywells and take additional drainage measures to encourage flood mitigation during rain events.
- Add benches along walking paths throughout the park.

Amenity	Assessment
BBQ PIT/ GRILL	3
LANDSCAPE AREA (AC)	4
LIGHTING (SITE, SPORTS, PED, ETC)	3
OPEN TURF AREA (AC)	3
PLAYGROUND (SHADED)	3
RAMADA	3
SIGNAGE (PARK ENTRY)	1
SIGNAGE (REGULATORY)	3
TRAIL - PAVED (MI)	3
TRASH RECEPTACLE	3



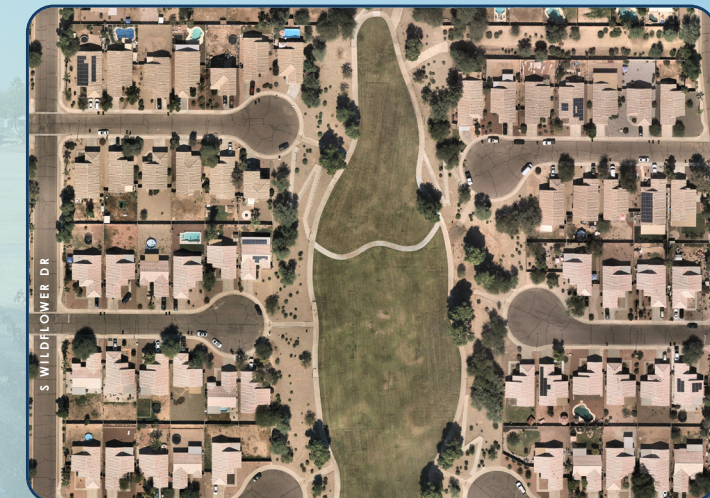
CITY OF Goodyear



WILDFLOWER PARK NORTH

- Replace play panels in playground.
- Add lighting to playground shade structure.
- Work with APS to replace and match light fixtures.
- Replace existing ramada and concrete pad.
- Reduce turf to alleviate irrigation pressure issues.
- Add walkway to adjacent streets for improved neighborhood connectivity.
- Add a drinking fountain to the park.
- Replace concrete header where needed as a result of adjacent tree roots.
- Add drywells and take additional drainage measures to encourage flood mitigation during rain events.
- Add benches along walking paths throughout the park.

Amenity	Assessment
BBQ PIT/ GRILL	3
LANDSCAPE AREA (AC)	4
LIGHTING (SITE, SPORTS, PED, ETC)	3
OPEN TURF AREA (AC)	3
PLAYGROUND (SHADED)	3
RAMADA	3
SIGNAGE (PARK ENTRY)	1
SIGNAGE (REGULATORY)	3
TRAIL - PAVED (MI)	3
TRASH RECEPTACLE	3



THE COMMUNITY WORKSHOP NO. 3

Meeting

8/17/2022



CITY OF Goodyear



LOMA LINDA PARK

- Improve turf areas outside of community room.
- Consider a more permanent solution for storage rather than the existing temporary storage solution.
- Relocate benches to concrete pads outside of turf areas.
- Add irrigation to the perimeter of the park adjacent to the church. This area has trouble receiving flood irrigation.
- Irrigation evaluation for the entire site and renovations based on the recommendations of the irrigation study.
- Add lighting to playground shade structures.
- Add shade to the existing horseshoe pits.
- Consider audio/visual improvements in community room.
- Consider indoor/outdoor space and improved exterior at community room.
- Perform tree lifecycle assessment and identify strategy for tree replacement as necessary.



Amenity	Assessment
BENCH	3
COMMUNITY CENTER	4
FENCING (LF)	4
HORSESHOE PIT	5
LANDSCAPE AREA (AC)	5
LIGHTING (SITE, SPORTS, PED, ETC)	4
MULTIUSE COURT (LIGHTED)	4
OPEN TURF AREA (AC)	3
PARKING LOT (SPACES)	2
PICNIC TABLE	3
PLAYGROUND (SHADED)	3
RAMADA	2
RESTROOM BUILDING	3
SIGNAGE (REGULATORY)	3
TRAIL - PAVED (MI)	4
TRASH RECEPTACLE	3

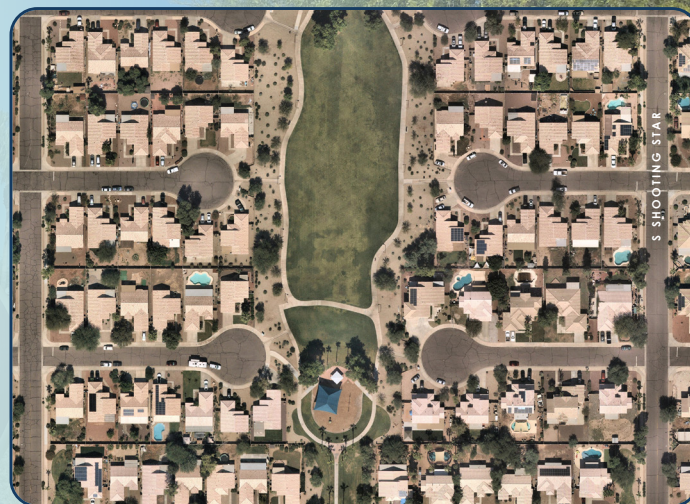
CITY OF Goodyear



WILDFLOWER PARK SOUTH

- Relocate and replace trash receptacles from slopes and place on concrete pads near benches.
- Replace existing ramada and concrete pad.
- Add lighting and ADA ramp to playground.
- Work with APS to match light fixtures.

Amenity	Assessment
BENCH	3
DOG BAG STATION	4
LANDSCAPE AREA (AC)	3
LIGHTING (SITE, SPORTS, PED, ETC)	3
OPEN TURF AREA (AC)	3
PICNIC TABLE	4
PLAYGROUND (SHADED)	4
PUBLIC ART	3
RAMADA	2
SIGNAGE (REGULATORY)	2
TRAIL - PAVED (MI)	3
TRASH RECEPTACLE	4



THE COMMUNITY WORKSHOP NO. 3

Meeting

8/17/2022



CITY OF Goodyear



ESTRELLA VISTA PARK NORTH

- Add a water meter and consider slight turf reduction to alleviate irrigation pressure issues.
- Create a formal connection to nearby school.
- Add more park walkways and ensure all walkways have adequate lighting.
- Create better walkway alignments for improved neighborhood connectivity and to easier navigate slopes.
- Add lighting and ADA ramp to playground area.
- Replace trash cans.
- Add more benches.
- Replace cage on backflow preventer.
- Add park signage.

Amenity	Assessment
BBO PIT/ GRILL	3
BENCH	2
DOG BAG STATION	4
LANDSCAPE AREA (AC)	3
LIGHTING (SITE, SPORTS, PED, ETC)	3
OPEN TURF AREA (AC)	4
PICNIC TABLE	3
PLAYGROUND (SHADED)	3
PUBLIC ART	4
RAMADA	3
SIGNAGE (REGULATORY)	4
SOCCER FIELD (NON-LIGHTED)	3
TRAIL - PAVED (MI)	4
TRASH RECEPTACLE	3



CITY OF Goodyear



PALMATEER PARK

- Add lighting to pathway.
- Replace turf and irrigation system to improve turf quality.
- Replace playground equipment.
- Add lighting to playground shade structure.
- Identify strategy for tree replacement as necessary.
- Add a ramada to the park site.
- Convert adjacent street island from turf to decomposed granite.



Amenity	Assessment
BENCH	3
LANDSCAPE AREA (AC)	3
LIGHTING (SITE, SPORTS, PED, ETC)	2
OPEN TURF AREA (AC)	3
PICNIC TABLE	3
PLAYGROUND (SHADED)	4
SIGNAGE (REGULATORY)	2
TRAIL - PAVED (MI)	3
TRASH RECEPTACLE	3

THE COMMUNITY WORKSHOP NO. 3

Meeting

8/17/2022



CITY OF Goodyear



ESTRELLA VISTA PARK SOUTH

- Add lighting and ADA ramp to playground area.
- Replace ramada structures.
- Consider turf reduction on slopes to relieve irrigation pressure issues and erosion.
- Remove existing backstop in turf area.

Amenity	Assessment
BASKETBALL COURT (LIGHTED)	3
BBQ PIT/ GRILL	2
DOG BAG STATION	4
DRINKING FOUNTAIN	3
LANDSCAPE AREA (AC)	3
LIGHTING (SITE, SPORTS, PED, ETC)	4
OPEN TURF AREA (AC)	3
PICNIC TABLE	3
PLAYGROUND (SHADED)	3
RAMADA	2
SIGNAGE (REGULATORY)	2
TRAIL - PAVED (MI)	4
TRASH RECEPTACLE	4



CITY OF Goodyear

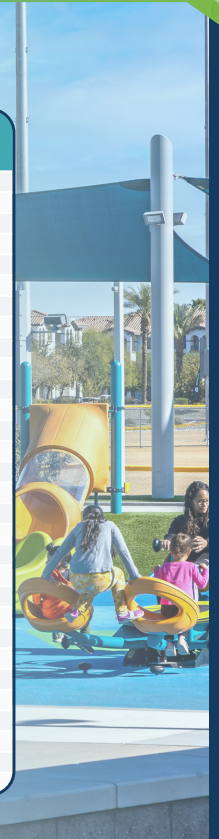


GOODYEAR RECREATION CAMPUS

- Multi-use pathways
- Community Fishing / Irrigation Lake
- Open Space
- Nature Play



Amenity	Assessment
AMPHITHEATER	5
BASEBALL FIELD (LIGHTED)	5
BASKETBALL COURT (LIGHTED)	5
BBQ PIT/ GRILL	5
BENCH	5
BIKE RACK/ LOOP	5
BLEACHERS	5
COMMUNITY CENTER	5
DOG BAG STATION	5
DRINKING FOUNTAIN	5
FENCING (LF)	5
FLAG POLE	5
LANDSCAPE AREA (AC)	5
LIGHTING (SITE, SPORTS, PED, ETC)	5
MAINTENANCE YARD/ BUILDING	5
MULTIUSE FIELD (LIGHTED)	5
OPEN TURF AREA (AC)	5
PARKING LOT (SPACES)	5
PICKLEBALL COURT	5
PICNIC TABLE	5
PLAYGROUND (SHADED)	5
PUBLIC ART	5
RAMADA	5
RESTROOM BUILDING	5
SIGNAGE (PARK ENTRY)	5
SIGNAGE (REGULATORY)	5
TENNIS COURT (LIGHTED)	5
TRAIL - PAVED (MI)	5
TRASH RECEPTACLE	5
VOLLEYBALL COURT (SAND)	5



THE COMMUNITY WORKSHOP NO. 3

Meeting

8/17/2022



CITY OF
Goodyear



ROSCOE DOG PARK

- Look at entrance area as this is always worn.
- Look at placement of shade areas to encourage use throughout the entire dog park area to help with maintenance and wear.
- Either tie in drinking fountain leach line to sanitary sewer at restroom - would require crossing the parking lot area or add real drywell in retention basin to accommodate drainage and drinking fountain drain line.
- Park has limited perimeter light poles which are APS owned. Look at updated lighting per park standard to provide more coverage as park is utilized during the night throughout the year.
- Add dog agility features.
- Apply shade standard per City Shade Study.
- Add 6ft - 8ft gate for each cell for section for maintenance access.
- Develop dog park standard to include three cells, lighting coverage, community access and maintenance access.

Amenity	Assessment
CONCRETE	3
DOG BAG STATION	3
DRINKING FOUNTAIN	3
FENCING (LF)	3
LANDSCAPE AREA (AC)	2
LIGHTING (SITE, SPORTS, PED, ETC)	4
PARKING	3
BASIN IN PARKING LOT	2
PUBLIC ART	4
RESTROOM BUILDING	4
SHADE STRUCTURE (STAND-ALONE)	2
SIGNAGE (REGULATORY)	4
SITE FURNISHINGS	4
TRASH RECEPTACLE	3



CITY OF
Goodyear



FOOTHILLS COMMUNITY PARK

- Address baseball plaza trees - issue of constant replacement due to damage. Remove tree grates to plant larger 36-inch tree.
- Remove / replace existing halide baseball sports lighting with LED fixtures at park baseball standard for little league light levels.
- Pump track not currently being maintained - hire third party to maintain as the track gets used and starting to deteriorate.
- Address parking area for soccer - City added temporary parking area.

Amenity	Assessment
BASEBALL FIELD (LIGHTED)	3
BENCH	4
CONCRETE	3
DRINKING FOUNTAIN	3
DUGOUTS	3
IRRIGATION SYSTEM (AC)	3
LANDSCAPE AREA (AC)	3
LIGHTING (SITE, SPORTS, PED, ETC)	4
PARKING LOT (SPACES)	4
PLAYGROUND (SHADED)	4
RAMADA	2
RESTROOM BUILDING	4
SIGNAGE (REGULATORY)	4
TRASH RECEPTACLE	3
TREE GATES	2

